

SiteWelder: Creating and Saving Images for the Web

Open your original scanned image in Photoshop. If the original image has an embedded profile, convert the profile into an "sRGB IEC6 1966-2.1" Profile." (Image/Mode/Convert to Profile). To avoid your images changing color when they show up on the web, this so-called "web profile" must be used.

Assuming you are working from a fairly large original scan, pull down the Image Size command (Image/ Image Size). Change the document size resolution to 72 pixels/inch. Under the pixel dimensions, adjust the width and height to your desired output.

Most images look good on most monitors at 450-700 pixels wide for horizontal images and 350-500 pixels high for vertical images. We suggest 600 pixels maximum width and 450 pixels maximum height to insure an appropriate image for viewing on most monitors. If you think your viewers will be using larger monitors (19" or above), try 900 pixels maximum width and 600 pixels maximum height. You should also adjust your maximum upload height/width on the [Site Preferences](#) page of SiteWelder.



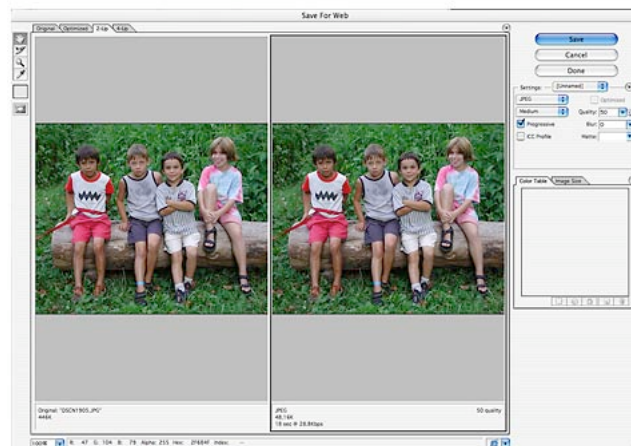
When you initially resize your image, it will appear smaller ... use the keyboard command **command + +** on a Mac or **control + +** on a PC to increase the image size to 100% on your monitor. Remember, the resolution on monitors is only 72 pixels per inch. That is all you need to display the image correctly on other computers. Since there are 72 pixels to the inch, a 6-inch wide image would be 432 pixels wide (6 x 72).



After you resize an image to a smaller image resolution, you usually need to re-sharpen the image to make it look more like the original image. Use the "Unsharp Mask" tool (Filter/Sharpen/Unsharp Mask...). We suggest trying a 70-100 percent amount, using a radius of 0.5 pixels and a threshold of 5 levels. Try different amounts until you come up with the amount you want. Make sure the "Preview" is checked on the dialogue box.

After you resize and re-sharpen your image, save your image as a .JPG file. If you want to retain the meta data stored inside your Photoshop file, use the "Save As ..." command (File/Save As ...). Try saving your file at about 6 or 7 quality. Don't save your files at the highest setting (12) - it will make your file size much larger than necessary for web display, and the lower quality setting should look very good for most images.

If you don't need to save the meta data with your file, we suggest using the "Save for Web" option in Photoshop. (File/Save For Web) When the dialogue box comes up, click on the "2-up" option in the top left tab. This will allow you to see your original file on the left and your destination file on the right. On the top right, make sure the "JPEG" is selected in the pull-down options under settings. You can leave the "Optimized" option unchecked. In the quality option, we usually save images at around 50 quality. This usually gives a good combination of reduced image size and good quality. If your image doesn't look good enough at 50, try higher numbers like 60 or 70. Saving at 100 quality level will give you the best possible quality, but will leave you with a large file.



IMPORTANT: To display your images properly in any Flash movies you might use on your site, do not save your images as progressive JPGs. Progressive JPGs do not show up properly in Flash movies (including the Flash movie option on your home page).

Save as .JPG files and be sure to append the .JPG extension to your file names. Your file names need to conform to web-based standards for file naming, and you need the .JPG extension for your file to be displayed properly on the web. *Do not save a profile with your images for the web.*